



**DIY
Shell Kits
Available**

Tiny House format premium dwelling suitable for backyard cottage Accessory Dwelling Unit (ADU), cabin, home office and more.

- 448 sf exterior footprint, 398 sf ground level plus 96 sf loft area = 494 sf interior space
- 16 x 28' footprint, 14' to roof peak*
- 8 x 12' sleeping loft with ladder access*
- 5 x 12' bathroom with laundry under loft; various bathroom and kitchen finish & appliance options
- Various end wall options; premium curtain wall windows shown
- Rooftop solar, metal / architectural shingle roofing options

Structural Insulated Panel (SIP) construction, **premium Eco-Panels 6.5" thick R-40 walls, 8.25" thick R-52 roof**. Subject to mechanical systems likely to achieve Energy Star and DOE Zero Energy Ready Home certifications & tax credits.

YardHomes Turnkey installation Service in MN, or DIY Shell Kit and Window Kit shipped nationally.*

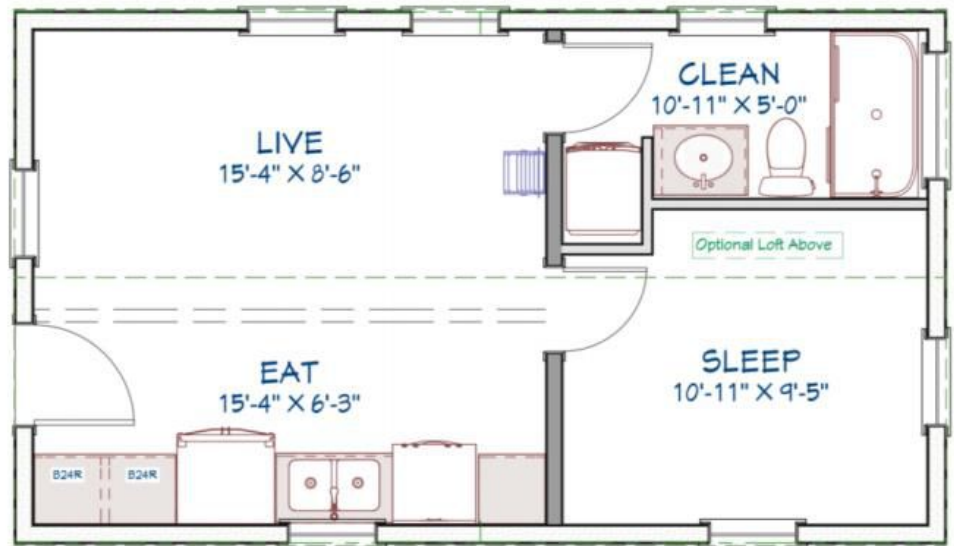
- Confirm complies with zoning and building codes in your jurisdiction.



www.YardHomesMN.com

CitiCabin®

YardHomes
Turnkey Installation
includes 5 x 11'
bathroom with
sleeping loft above



Exterior / Interior Finishes

- LP Smartsiding integrated exterior cladding, 24" OC board & batten
- Drywall or tongue and groove (vertical or horizontal) wall finish
- Furniture grade plywood ceiling finish, ZIP System® roof sheathing, both integrated into 8.25" R-52 roof panel
- Timberline® asphalt shingles or Premium Pro-Rib® metal roof
- Energy Star certified premium Kolbe Forgent double-pane fiberglass window package
- LVT plank flooring standard; upgrades available

Mechanical Equipment

- Daikin Aurora® ductless mini-split*
- Renewaire® energy recovery ventilator (ERV)*
- GE® tankless electric water

Kitchen & Bath

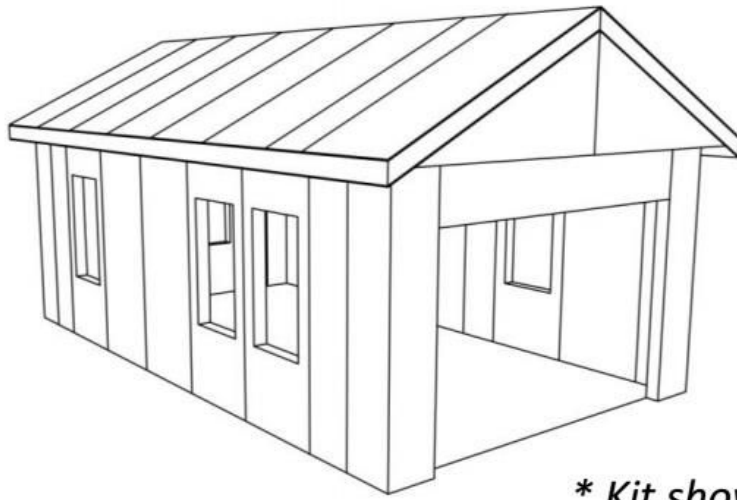
- 8-12' wall kitchens and range of bathroom options

- Mechanical equipment subject to change; brand names and trademarks are of the respective companies.



www.YardHomesMN.com

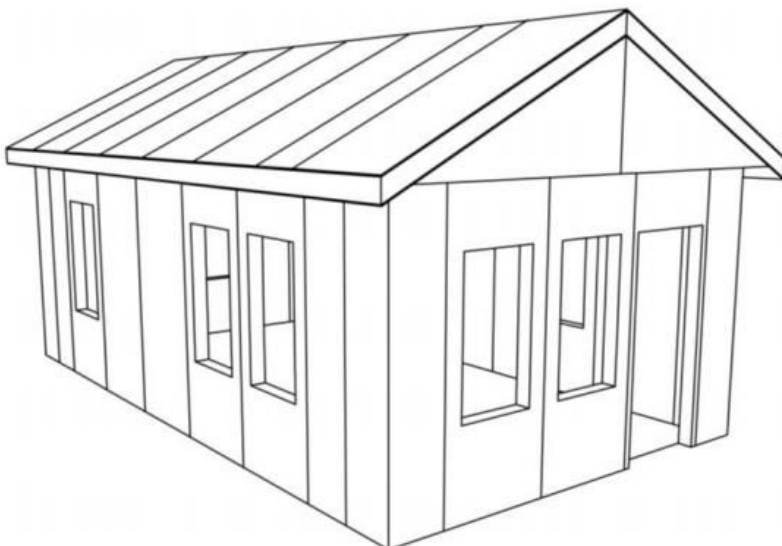
CitiCabin®



** Kit shown with Expanded Door Opening*

Premium Eco-Panels provide market-leading strength, insulation, quality and durability.

- R-40 walls (6.5" thick) and R-52 roofs (8.25" thick)
- Flame retardant and organic-based foam core
- No formaldehyde, styrenes or VOC
- About 14,000 pounds bonding force per square foot; 2-3 times stronger than a conventional stud frame wall with sheathing
- Integrated 7/16" structural LP Smartsiding exterior and 7/16" structural OSB interior on walls
- Integrated 7/16" ZIP sheathing exterior and 22/32nd structural AC plywood on interior of roof panels
- Integrated CAM-locks on panel seams to lock each panel together
- Integrated 2x framing in all openings



DIY Shell Kit available:

- 10' tall, 6.5" thick wall panels
- 10' long 8.25" thick roof panels
- Two-piece glulam roof beam
- Installation hardware

** Kit shown with Standard Door Opening*



www.YardHomesMN.com

CitiCabin®

Matching Kolbe Forgent double-pane window package available, including:

- Two (2) 31.5" x 60" direct set over 31.5 x 20" awnings*
- Two (2) 31.5" x 60" direct set
- Two (2) 31.5" x 60" casement, left hinge
- One (1) 31.5" x 20" awning
- All awning windows tempered with screens



An electrical kit to match the CitiCabin interior dimensions also available, including:

- 120 amp exterior meter socket
- Exterior panel box
- All required outlets per code
- 120-volt bathroom and kitchen wiring for customary bathroom outlets and typical all-electric kitchen appliances and ERV
- 3 x 240 volt circuit and related wiring for ductless mini-split and tankless electric water heater and cooktop
- Smart home panel with backup UPS
- Low voltage lighting package with panel, interior and exterior LEDs with backup UPS
- Complete electrical drawings, wires, circuits; customer to purchase bulky conduit locally



***DIY Eco-Panels Shell Kit + Window Kit + Electrical Kit
Shipped Anywhere in Continental USA****

- Typical third-party shipping, road accessible location required

